



# Need to Know

## Land and Water Conservation Fund (LWCF)

Proposed by President Kennedy in 1963 and established in 1965 for 25 year period

25 year renewal granted in 1990

1990-2015 25-year renewal

3-year renewal expires September 30, 2018

\$\$\$

## Virginia Outdoors Plan (VOP)

Virginia's comprehensive plan for land conservation, outdoor recreation and open-space planning. The document helps all levels of government and the private sector meet needs pertaining to those matters.

**The VOP is a requirement for Virginia to participate in the LWCF program.**

Since 1965, Virginia has received more than \$76 million in LWCF grants through the National Park Service. DCR is tasked with dispersing these grant funds statewide for public outdoor recreation. More than 400 projects across the state have been made possible through this funding. These projects range from improvements at existing parks to land acquisitions for developing new parks.

### 1920 - 1940

- VA Conservation and Development Commission is created in 1926 to oversee the management of Virginia's natural resources
- GCV, VAS and IWL meet in 1929 and pass resolutions in support of State Parks.
- First 6 VA State Parks open in 1936.

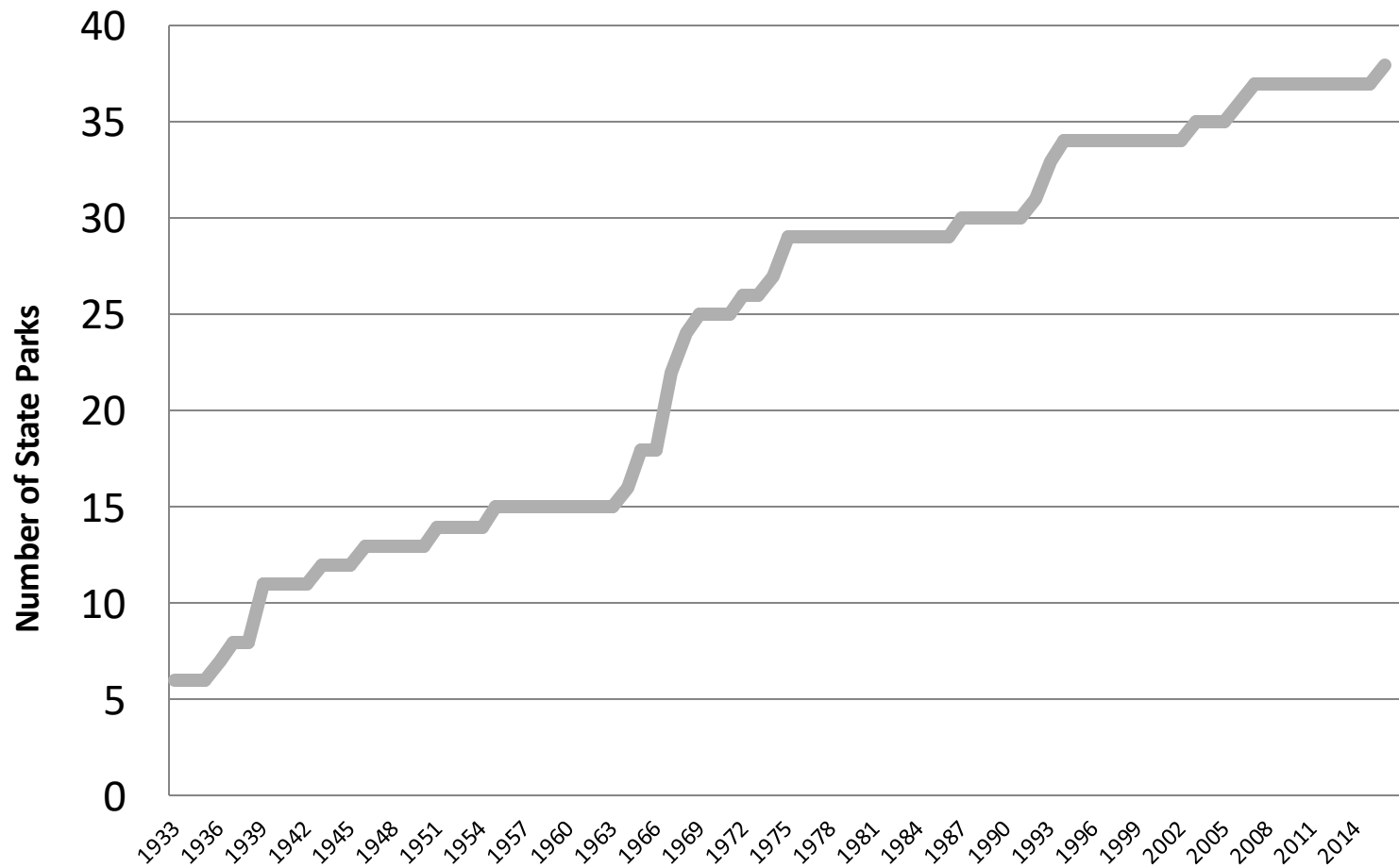
### 1960 – 1980

- VA Outdoor Recreation Study Commission is created with GCV Honorary Member Fitzgerald Bemiss as chairman.
- Take stock, establish need
- The Commission establishes the **Virginia Outdoors Plan**.

### 2000 - 2020

- GCV initiates 5-year \$500,000 Centennial Grants program for VA State Parks.

## VA State Parks Growth 1933 - 2016



21 Clubs have partnered with 18 VA State Parks to secure funding through our 2020 Centennial Project.

Belle Isle

Caledon

Fairy Stone

Holliday Lake

Hungry Mother

James River

Lake Anna

Leesylvania

Mason Neck

Middle Peninsula

Natural Bridge

Pocahontas

Shenandoah River

Sky Meadows

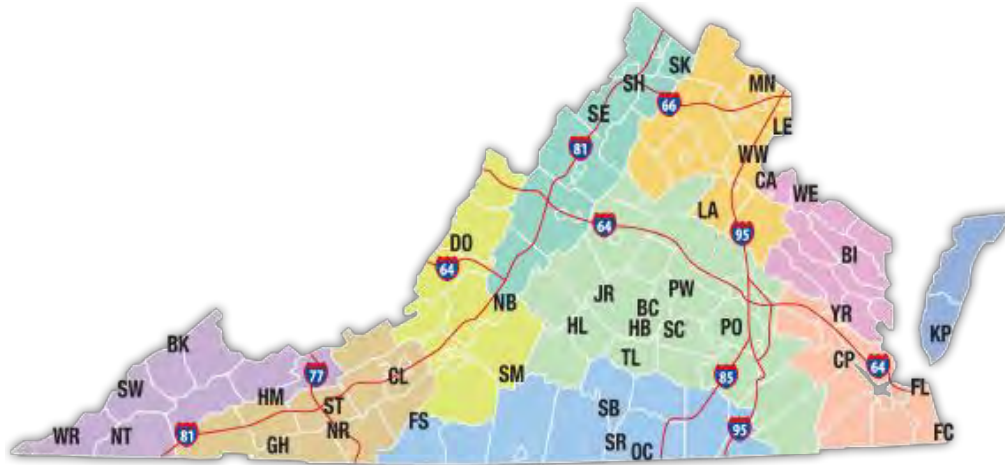
Smith Mountain Lake

Staunton River

Westmoreland

York River

Youth Conservation Corps



The Garden Club of Alexandria

The Blue Ridge Garden Club

The Garden Club of Danville

The Garden Club of Fairfax

Fauquier and Loudoun Garden Club

The Garden Study Club

The Garden Club of Gloucester

The Hampton Roads Garden Club

Hillside Garden Club

The Hunting Creek Garden Club

The Huntington Garden Club

The James River Garden Club

The Lynchburg Garden Club

The Martinsville Garden Club

Mill Mountain Garden Club

The Garden Club of the Northern Neck

The Rappahannock Valley Garden Club

Rivanna Garden Club

The Roanoke Valley Garden Club

The Garden Club of Warren County

Williamsburg Garden Club

<http://www.dcr.virginia.gov/state-parks/find-a-park>



Education

Wildlife Habitats

Native Plant and Pollinator Gardens

Landscaping Improvements

Shoreline Restoration

Accessibility

Recycling

Youth Conservation Corps



Paved Hiking Trails

Statuary

Pontoon Boats

Staffing and Salaries

Transportation

## 2017 VIRGINIA STATE PARKS \$129,417

1. **Belle Isle** - Improving landscaping around historic Belle Isle mansion *The Garden Club of the Northern Neck*
2. **Fairy Stone** - Pollinator waystation *The Martinsville Garden Club, The Garden Study Club, The Garden Club of Danville*
3. **Leesylvania** - Wildflower planting, reducing invasives and eliminating mowing
4. **Mason Neck** - New Visitor Center entry; hardscaping and landscaping of pollinator garden *The Hunting Creek Garden Club, The Garden Club of Fairfax, The Garden Club of Alexandria*
5. **Middle Peninsula** - Supplies for educational programming *The Garden Club of Gloucester*
6. **Natural Bridge** - Outfitting a classroom for educational programming in Visitor Center
7. **Pocahontas** - Converting a Heritage Center to a Discovery Center
8. **Sky Meadows** - Track Trails and Discovery area *Fauquier and Loudoun Garden Club*
9. **Smith Mountain Lake** - Supplies for educational programming in wet lab *The Roanoke Valley Garden Club, Mill Mountain Garden Club*
10. **Staunton River State Park** – Beautification of grounds surrounding Civilian Conservation Corps guest cabins. *The Garden Club of Danville*
11. **Youth Conservation Corps** - Supplies for residential summer program in 17 parks

## 2018 VIRGINIA STATE PARKS \$114,145

1. **Belle Isle** – phase two of improvements to the landscape at the Belle Isle mansion and enhancing learning panels in Visitor’s Center *The Garden Club of the Northern Neck*
2. **Caledon** – drinking fountain *The Rappahannock Valley Garden Club*
3. **Holliday Lake** – underwater lighting *Hillside Garden Club and The Lynchburg Garden Club*
4. **Hungry Mother** – Children’s Discovery area
5. **James River** – native plant and pollinator garden *Rivanna Garden Club*
6. **Lake Anna** – native plant landscaping around new cabins *The Rappahannock Valley Garden Club*
7. **Natural Bridge** – continued improvements to Interactive Classroom *The Blue Ridge Garden Club*
8. **Pocahontas** – shoreline restoration *The James River Garden Club*
9. **Shenandoah River** – Pollinator Meadow with bee habitat *The Garden Club of Warren County*
10. **Sky Meadows** – Children’s Discovery area and trails *Fauquier and Loudoun Garden Club*
11. **Westmoreland** – creating a Discovery center in the former Visitor’s Center *The Garden Club of the Northern Neck*
12. **York River** – landscaping improvements in three gardens *The Hampton Roads Garden Club, The Huntington Garden Club and The Williamsburg Garden Club*
13. **Youth Conservation Corps** – to help with purchase of materials

# Caledon State Park



**Rappahannock Valley Garden Club**

Reduce the amount of plastic trash in the park.

**Outdoor Bi-level Fountain with Pet Station**



# James River State Park

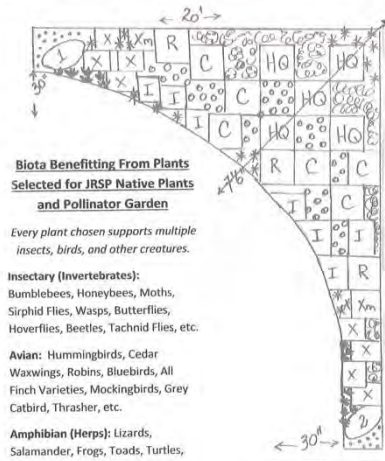


## Rivanna Garden Club

### Native Plant and Pollinator Garden

Improve Visitor Center landscaping with low maintenance native plants.

A. Garden Schematic (with plants to be used and biota benefitted)



**Legend:**

- 1 to 3 - Large Rocks for Sitting
- X - Ilex "Red Sprite Nana"
- Xm - Ilex male "Jim Dandy"
- R - Rhododendron pericyliumoides
- I - Itea "Little Henry"
- C - Clethra "Sugartina"
- HQ - Hydrangea quercifolia "Ruby Slippers"
- Solidago flexicaulis
- ☞ Carex flaccosperma
- ☞ Tiarella cordifolia v. cordifolia
- ☞ Christmas Fern (Polystichum acrostichoides)
- ☞ Pachysandra procumbens

**Biota Benefitting From Plants Selected for JRSP Native Plants and Pollinator Garden**

Every plant chosen supports multiple insects, birds, and other creatures.

**Insectary (Invertebrates):**  
Bumblebees, Honeybees, Moths, Sirphid Flies, Wasps, Butterflies, Hoverflies, Beetles, Tachnid Flies, etc.

**Avian:** Hummingbirds, Cedar Waxwings, Robins, Bluebirds, All Finch Varieties, Mockingbirds, Grey Catbird, Thrasher, etc.

**Amphibian (Herps):** Lizards, Salamander, Frogs, Toads, Turtles, Snakes, etc.

# York River State Park



Hampton Roads Garden Club  
Huntington Garden Club  
Williamsburg Garden Club



SEE PLAN # 2 OF THREE  
NEW PAVING TO FACILITATE  
HANDICAPPED ACCESS  
AND PLANTING PLAN

Three Garden Designs

# Shenandoah River State Park

## Garden Club of Warren County



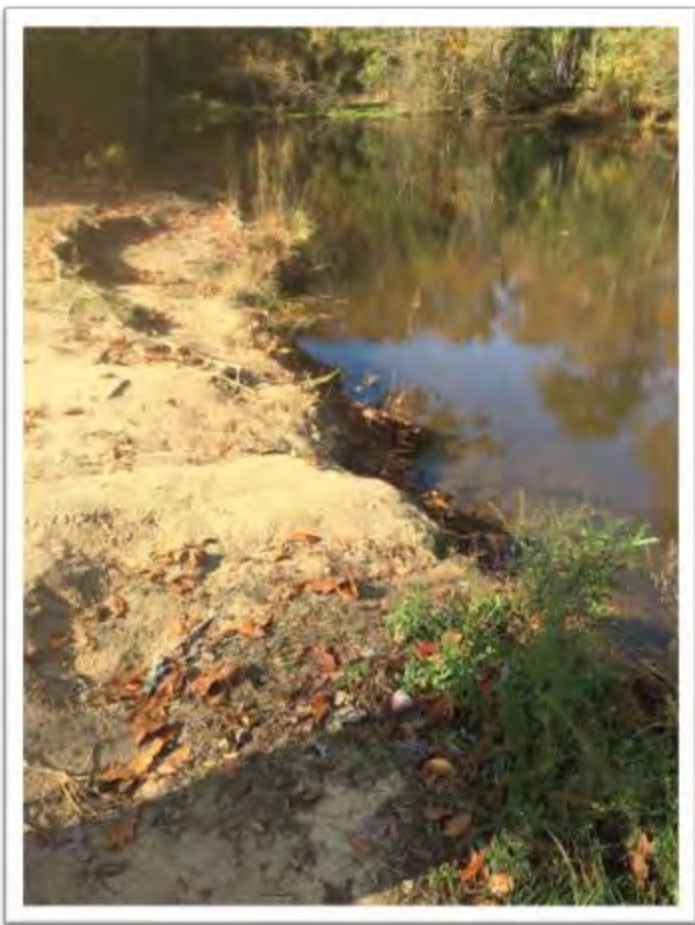
## Pollinator Meadow with Bee Habitat and Interpretation

# Hungry Mother State Park



Children's Discovery Area

# Pocahontas State Park



## James River Garden Club

Install 4 fishing nodes/platforms. Rehabilitate 2200 square feet of shoreline by reducing slope, removing invasive plants, installing erosion control materials, and planting native plant species. Rehabilitate 1400 square feet of riparian buffer zone by removing invasive plants and planting native plant species.

## Shoreline Rehabilitation and Installation of Fishing Platforms

# Holliday Lake State Park



**Hillside Garden Club  
Lynchburg Garden Club**

Illuminates what lies in the depths below and sheds light on the active nightlife under the water.

**Beneath the Surface**  
Underwater Lighting

# Sky Meadows State Park

**Sky Meadows State Park**

## Children's Discovery Area

Welcome to the Children's Discovery Area, your launching pad for kid-friendly outdoor exploration. Set off at your own pace to explore, create, and hike your way to discovering the agriculture, nature, history and recreation of Sky Meadows State Park.

The Discovery Area allows you and your children to become part of this pastoral landscape. It is situated within a 75-acre Outdoor Laboratory maintained by the Shenandoah Chapter of the Virginia Master Naturalists. It includes a Nature Explore Certified Outdoor Classroom®, with stations allowing children to create art, move freely, play music, build, dance, and more. It also includes a Kids in Park Track Trail®, providing you a stress-free, .7 mile introduction to Sky Meadows' trail system.



Our junction posts will guide you on your adventure through the entire Discovery Area. Follow these same junction posts as you explore the other 24 miles of trails in the park.

Sky Meadows' Children's Discovery Area was made possible thanks to the generous contributions of:

- Garden Club of Virginia Centennial Project
- Northern Virginia Hiking Club
- Virginia Master Naturalists, Shenandoah Chapter
- Friends of Sky Meadows



## Children's Discovery Area

Play stations are focused on the park's themes of agriculture, nature, and history that allow children to create art, move freely, and make music, build, dance, climb, dig and crawl.

**Fauquier & Loudoun Garden Club**













# Sky Meadows State Park

**Rabbit Run**  
**La Carrera del Conejo**  
When being chased by predators, rabbits sprint in a fast zig-zag pattern until they find cover.  
Cuando son perseguidos por un depredador, los conejos corren a toda velocidad en zig-zag hasta que se ponen a cubierto.



Run down the trail in a zig-zag until you find a large tree to hide behind.  
Corre por la senda haciendo zig-zag hasta encontrar un árbol grande y esconderte detrás.

**Squirrel Balance**  
**El Equilibrio de la Ardilla**  
Squirrels have long tails to help them balance and move quickly along branches without falling.  
Las ardillas tienen una cola larga que les permite mantener el equilibrio y moverse rápidamente por las ramas sin caerse.



Walk like you're on a balance beam and see how fast you can go.  
Camina lo más rápidamente posible como si estuvieras sobre una barra de equilibrio.

**TRACK your hike at [kidsinparks.com](http://kidsinparks.com) and get FREE prizes!**  
**Sigue tu ruta de montaña en [kidsinparks.com](http://kidsinparks.com) y gana premios GRATIS!**

Thanks for joining us on the trail today! Visit our website to find more TRACK Trail adventures near you!  
Gracias por acompañarnos en la ruta de hoy. Visita nuestra web y encontrarás nuevas aventuras.



The next generation of stewards will help preserve the world's plants, animals, natural lands and our heritage. What will you do to make a difference?  
La próxima generación ayudará a preservar el mundo de las plantas, los animales, la naturaleza y nuestro patrimonio. ¿Qué vas a hacer para dejar tu marca?



**ATENCIÓN: Estos ejercicios deben realizarse únicamente bajo la supervisión de una persona adulta.**  
**CAUTION: These exercises should only be performed with adult supervision.**



## TRACK Trails

Nationwide network of family-friendly outdoor adventures called TRACK Trails. Each TRACK Trail features self-guided brochures and signs. Trails, Ridges, Activities and Connections for Kids.



<http://www.kidsinparks.com/sky-meadows-state-park#adventures>

# Sky Meadows State Park



The Children's Discovery Area also includes a [Kids in Park TRACK Trail](#)<sup>®</sup>. Offering ample benches along its length, the [TRACK Trail](#) crosses streams, passes through woodlands, and traverses meadows before returning to its starting point. Families can explore the trail using four different colorful brochures.

The trail is designed so that each time you pick up a different brochure, you experience something new along the trail. The easy, well-marked .7 mile loop trail is designed to engage children and their families, helping them begin a lifetime of trail enjoyment. The junction posts along the trail will guide you on your adventure through the entire Discovery Area. After you've "gotten your feet wet" on the [TRACK Trail](#) you can follow these same junction posts and explore the other 24 miles of trails in the park.



## Welcome to the Sky Meadows State Park TRACK Trail

The Kids in Parks TRACK Trails program provides a network of trails designed for kids and families. Each TRACK Trail has a series of self-guided adventures. A different story unfolds within the pages of each brochure. They're fun, easy and free. Best of all, the fun doesn't stop at the trail's end because kids can earn Trail TRACKer Gear for each TRACK Trail adventure they register through the website

[kidsinparks.com](http://kidsinparks.com)

**Things to Know Before You Go!**

The Sky Meadows State Park Track Trail follows an easy 7-mile loop through farmland created from the forests, streams and meadows of yore. Continue your discovery adventure by selecting a brochure that interests you.

Then follow the and return here with new found confidence in hiking and exploring Sky Meadows. There are plenty of benches for resting and enjoying brochure activities. Take your time. When you return, use the Discovery Area's play stations to mimic sounds heard, draw discoveries, or build your own farm. Have fun!

**Discovery Area Play Stations**

1. The Orchard
2. Puppet Art
3. Scavenger Hunt
4. Animal Adoption
5. Paper Plate Fun
6. Feeder Settlement

Hi, I'm TRACK!



I'm KIP!



We'll be your guides for this adventurous trip. **Grab a brochure,** it's time to play. Let's see what we can find outside today!

Begin a lifetime of adventure in the Blue Ridge Mountains.

### Nature's Hide & Seek

I can't find KIP. He always hides so well. Can you help me?

Sinnoh! I'm hiding from TRACK!

Oh, there he is. You're a good hider!

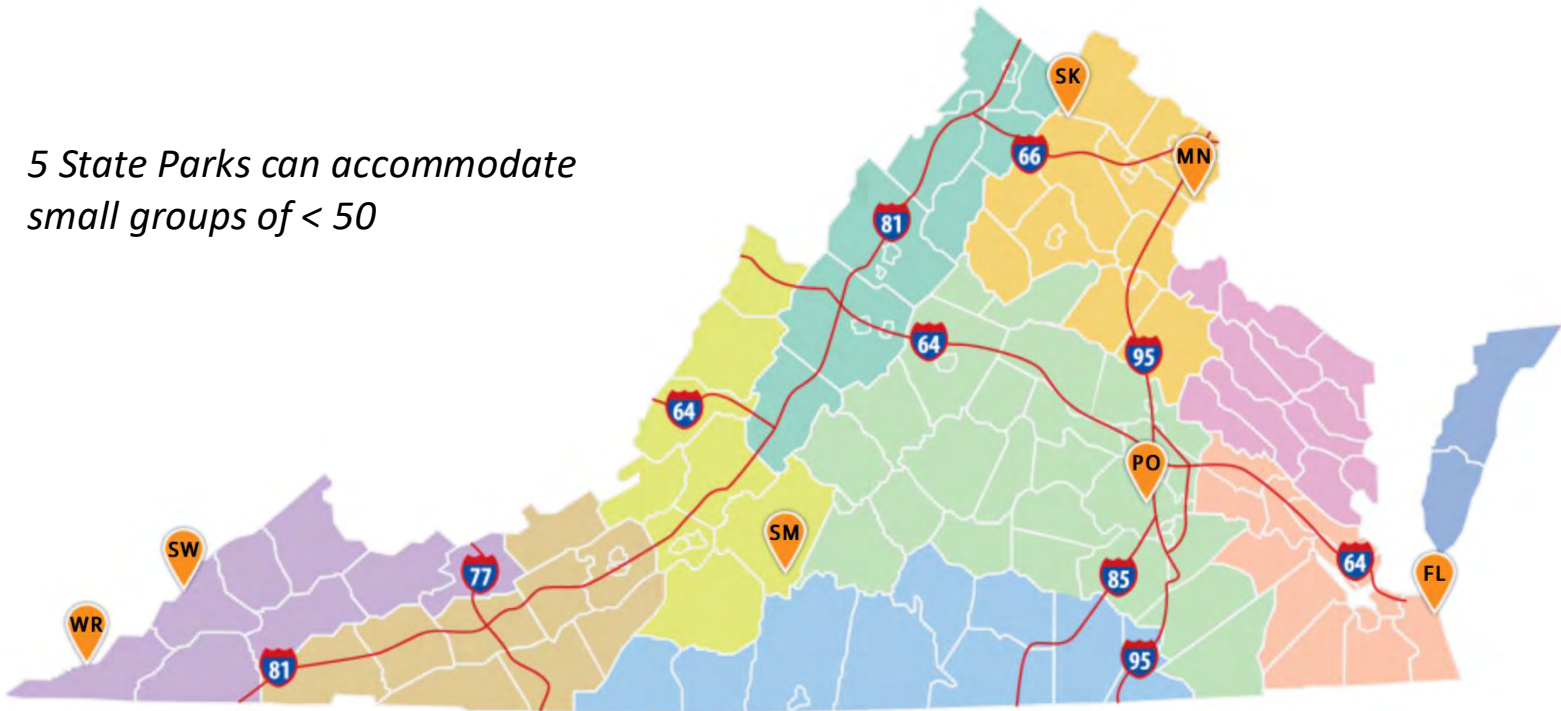
Now, let's find some other things hiding in nature. Just remember that all things in nature have a special place. Make sure you leave them there, so others can find them too!

### The Need for Trees

### Nature's Relationships: Everything is connected

# Plan a Meeting

*5 State Parks can accommodate small groups of < 50*



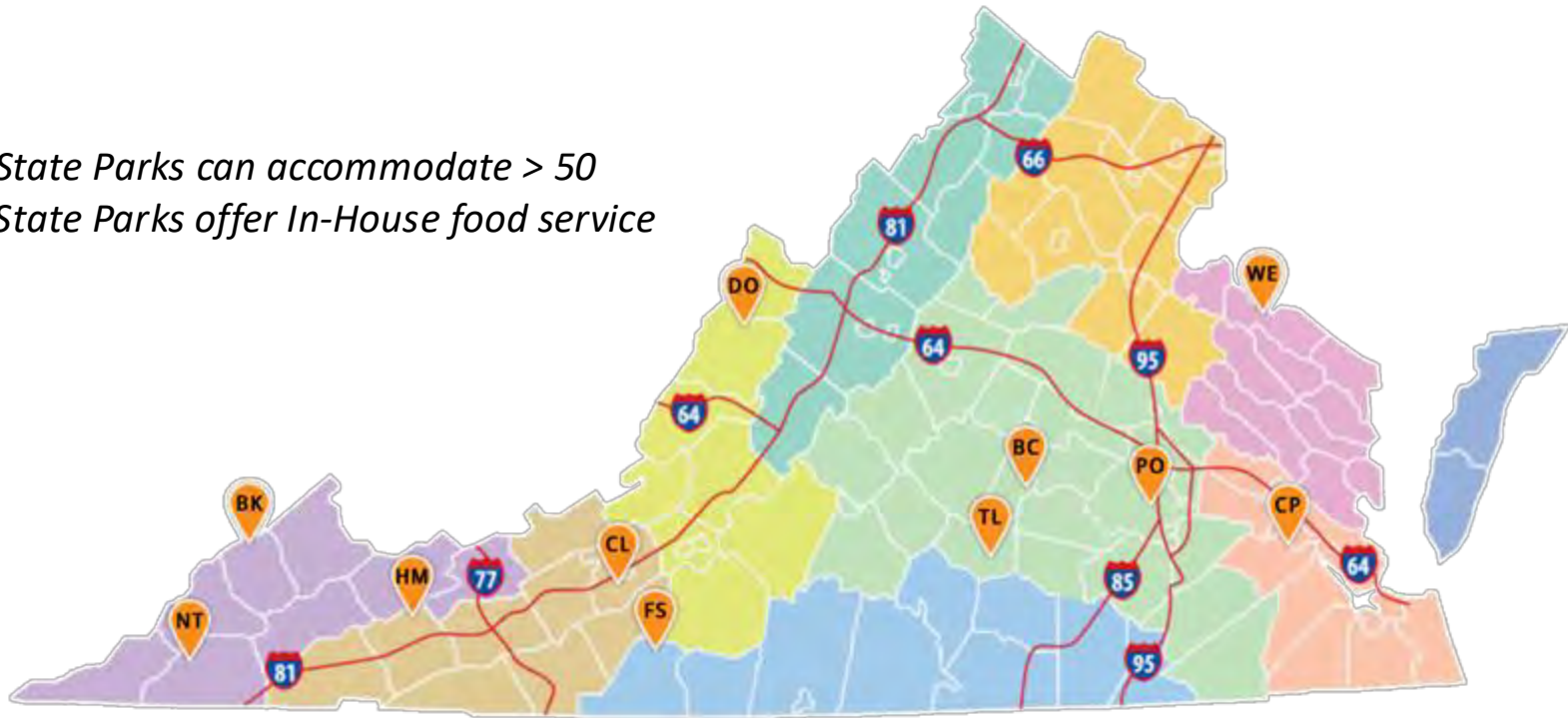
Pocahontas State Park (PO)  
First Landing State Park (FL)  
Southwest Virginia Museum (SW)  
Wilderness Road State Park (WR)

Wilderness Road State Park (WR)  
Mason Neck State Park (MN)  
Sky Meadows State Park (SK)  
Smith Mountain Lake State Park (SM)



# Plan an Event

*11 State Parks can accommodate > 50*  
*\*5 State Parks offer In-House food service*



Claytor Lake State Park (CL)  
\*Hungry Mother State Park (HM)  
Bear Creek Lake State Park (BC)  
Pocahontas State Park (PO)  
\*Twin Lakes State Park (TL)  
Westmoreland State Park (WE)

Chippokes Plantation State Park (CP)  
\*Breaks Interstate Park (BK)  
\*Natural Tunnel State Park (NT)  
Fairy Stone State Park (FS)  
\*Douthat State Park (DO)